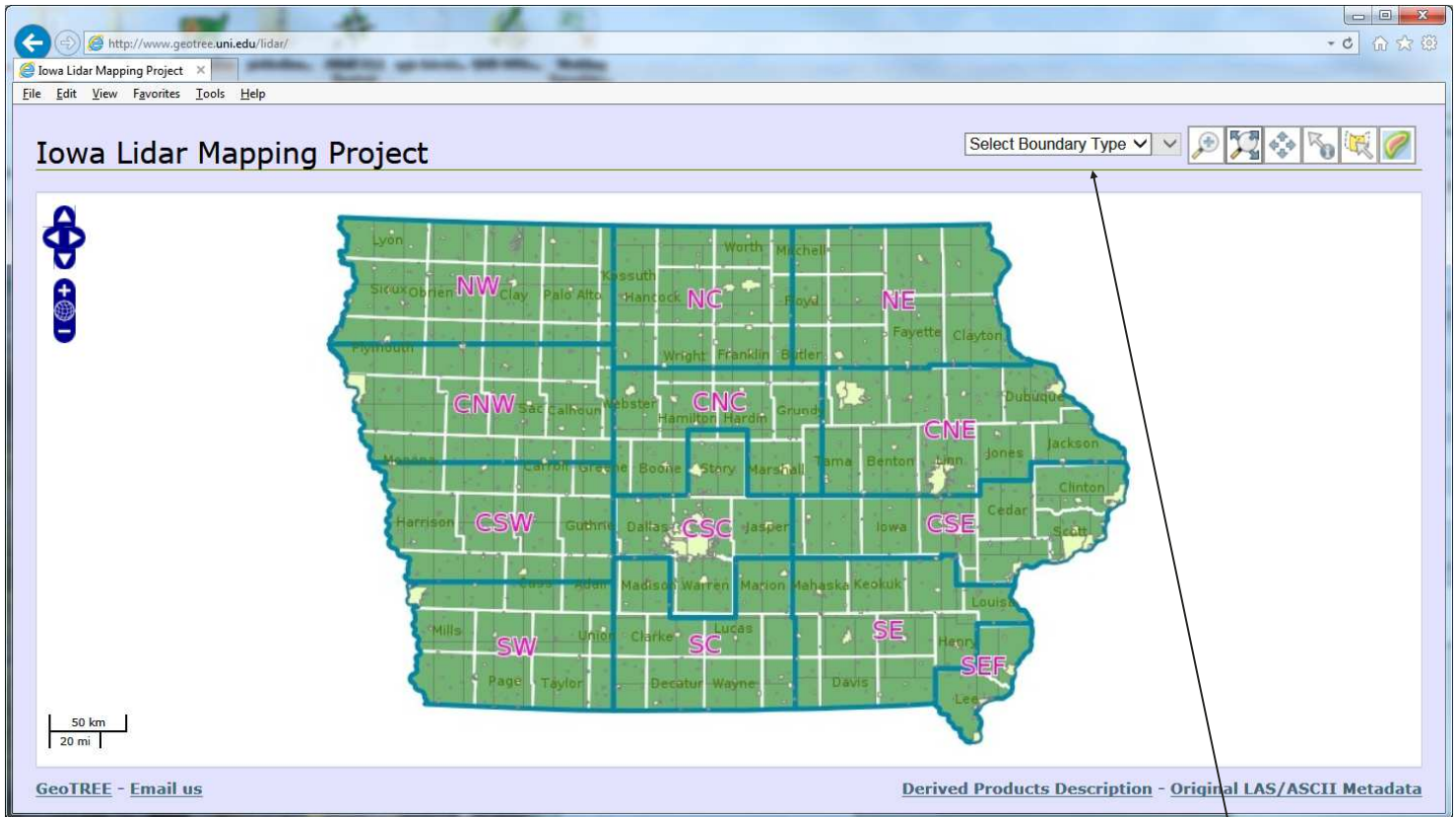


Downloading LiDAR—Iowa LiDAR Mapping Project

A source for importing LIDAR data in Iowa is the “Iowa Lidar Mapping Project”.

<http://www.geotree.uni.edu/lidar/>

Make sure there is no pop-up blocker on and they are allowed for this site.

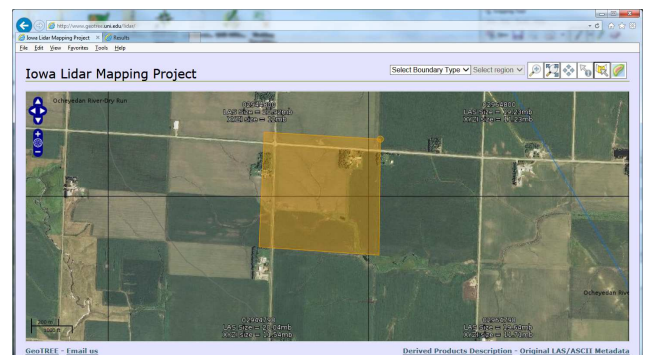


There are several ways to select an area to download.

1. Select an area by boundary type (e.g. counties, cities, watersheds).
2. Use the zooming tools on the top toolbar to get zoomed into the area to download.



- After getting zoomed into the area to download.
- Draw a polygon to select LiDAR tiles to download. (left click to drop points and double click to close the polygon).
- After drawing a polygon a popup will appear in another window with the download links and instructions on how to download the data. See next page.



Downloading LiDAR—Iowa LiDAR Mapping Project

Once the new window opens.

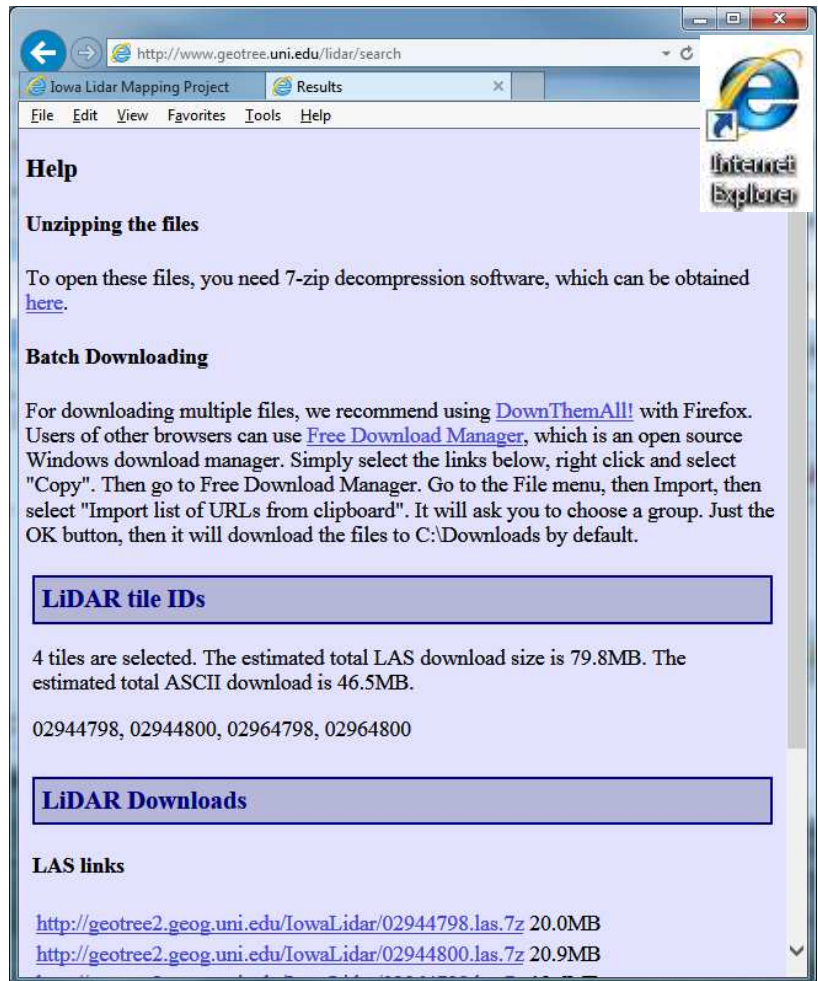
Note: you do need "7-Zip" for unzipping files.

If you are downloading a lot of files, you may want to use the "Free Download Manager". Do NOT install the "Software Informer" or other additional installs.

5. Select /Click on
"LiDAR download"

6. Click on the "LAS Links" to download.

7. Click "Save" when the download window opens.



In saving the files, we suggest you save the files back to your C:/GKData/Imagery/LiDAR folder. It is recommended to save all your files back to a "LiDAR" folder to keep things clear. If you are working with more than a couple counties of data, you may want to create "County" folders within the LiDAR folder.

Once saved there, the data must be UNZIPPED. Suggest cleaning up files so you have all the xxxx.las files in the "LiDAR" or "County" folder.

