



## KB Sugar Beet Yield Monitor

### Benefits of Yield Monitoring

- Allows producer to load trucks to optimal amount, help avoid overweight fines.
- Provides on-the-go readout of crop weight accumulating in the truck.

### Harvester Components



2 - 500 lbs. Load Cells

Shaft Speed Sensor

Junction Box

### In Cab Components

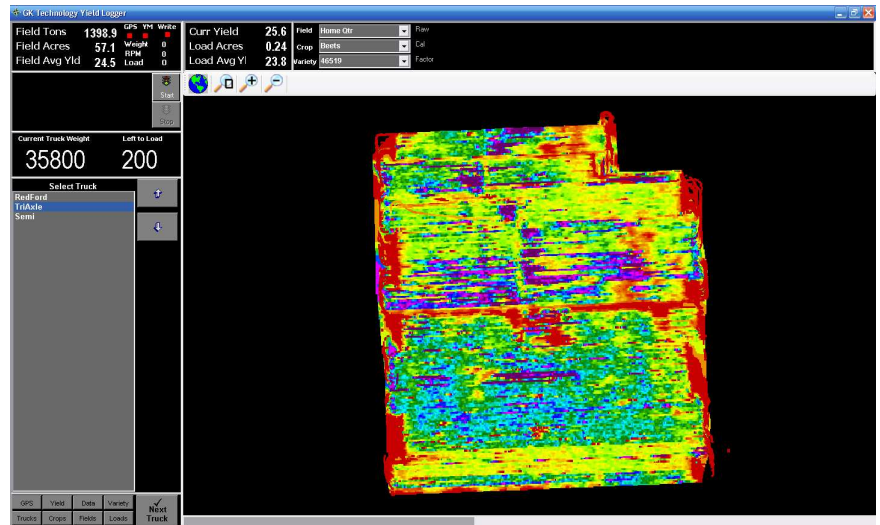


- KB Yield Monitor Box
- Connected to Harvester—1 wire
- Power wire—connected to 12 volt power
- Watch lbs. of product loaded on each "Load"
- Count up "Total LBS" loaded for the field



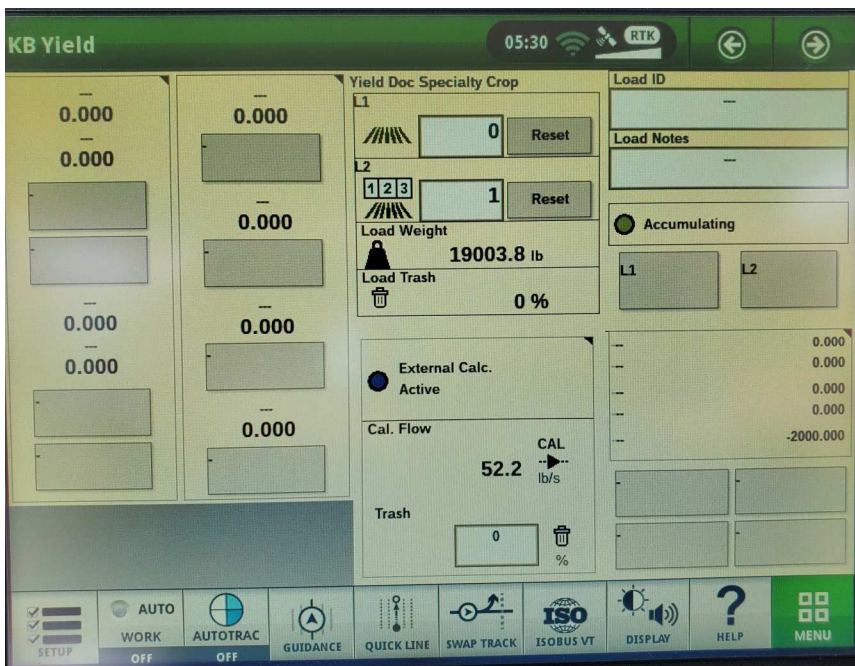
## Yield Mapping - GK Truck Crop Yield Mapping

- See on the go Yield and field average Yield on the Truck Crop Yield Monitor / Mapping PC
- Creates a on the go color yield map on Touch Screen PC
- View your previous "Loads" for season as your loading trucks
- Data can be converted to SHP & CSV files at the end of the season on your office PC.



*Requires a GK approved PC.*

## Yield Mapping - John Deere Interface



- Data logged onto your John Deere 2630 or 4600 display using the Deere GPS.
- System requires a John Deere 1120 application controller.
- Data will appear similar to your Grain Yield maps.
- Data can flow directly to Operations Center using JD Link, or transferred using a USB drive.



# John Deere Interface Components

## Parts Required from KB Mfg. & GK Technology

- KB Yield Monitor System with updated Cal Chip (as of 2012)
- GK—John Deere interface Box & wiring.

### GK Technology & KB Mfg.—Contacts:

Kelly Sharpe (GK Tech)

701-361-8199

or

Scott Knutson (KB Mfg.)

218-289-0736



## Parts Required from John Deere

- 2630 or Gen 4 display
- Display must be connected to John Deere GPS for mapping
- Yield Documentation, Specialty Crop (Application Controller 1120) (Order Code 0015PC)



### John Deere—Contacts:

Valley Plains Equipment (Crookston, MN)

Jeff Lindaas or Konner Moen 218-281-3683

- *KB & GK suggests Valley Plains, they have knowledge on setup & install.*

or

Your local John Deere parts department.

