

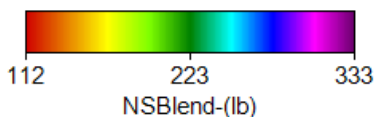
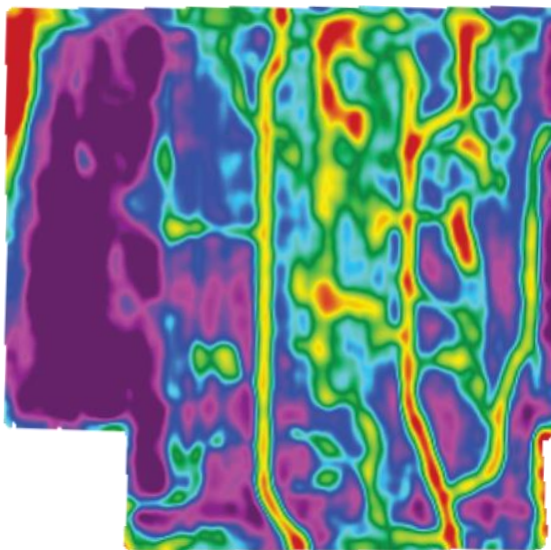
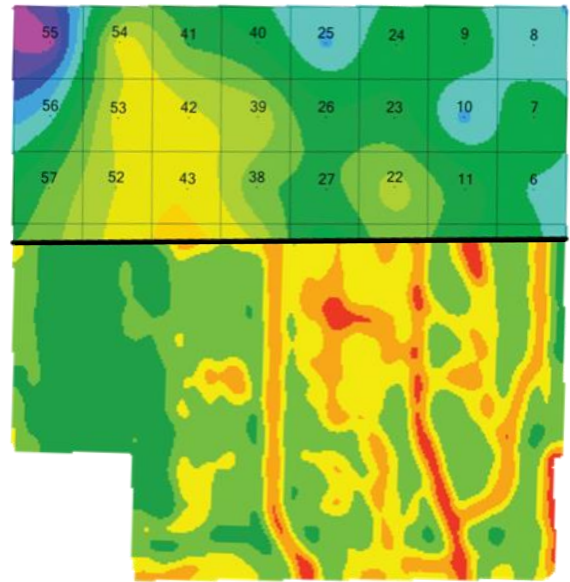


Mapping Services

Hire our knowledgeable and experienced staff when things get busy. Whether it's one or many fields, we can help you through the entire process of creating management zones, sampling, and writing the prescriptions. **Give us a call today!**

Zone & Grid Creation

- ✦ **Standard Zones** **\$2.25/ac**
 - Merge multiple data sources
- ✦ **Updating Zones** **\$35/field**
- ✦ **Confidence Zones** **\$2.75/ac**
 - Avg. & Max Productivity
 - Confidence Map
- ✦ **Grid Results & Yield Goals** **\$2.25/ac**
 - Create Grids
 - Nutrient Maps from Soil Samples
 - Yield Goal maps



Rx Maps & Analysis

- ✦ **First Rx Product** **\$1.25/ac**
- ✦ **Each additional Rx products** **\$0.50/ac**
 - Fertilizer, Seed, and/or spray
 - From Grids & Script
 - From Zones
- ✦ **Yield & Data Analysis** **\$2.00/ac**
 - Net Revenue (Inputs vs. Yield)
- ✦ **Season Package** **\$7.00/ac**
 - Includes Zones, VR Prescriptions, Drainage map, & Data Analysis

** GK Technology recommends zone & grid soil sampling for VR (variable rate) applications of fertilizers and lime. We recommend yield mapping prior to VR seeding. GK does not provide soil sampling, product application or seeding equipment or in field services. We will assist you in finding equipment and service providers if requested. We do have a minimum field size. Most Mapping will be turned around in 48 to 72 hours. All Prices are subject to change.*

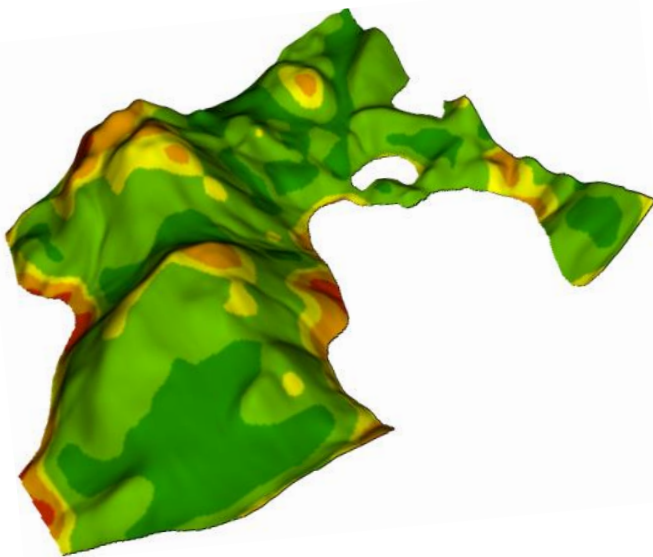
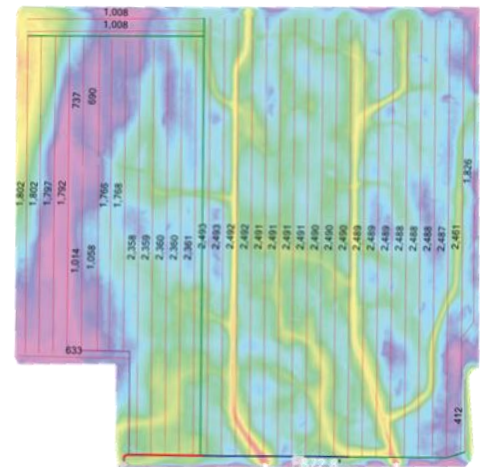
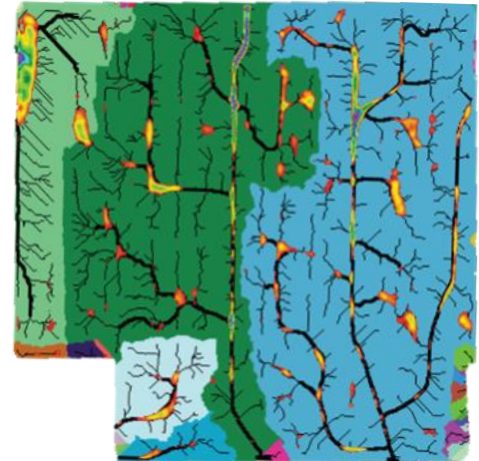


Drainage & Tile

- ✦ **Watershed Modeling** \$2.00/ac
 - Built off LiDAR or RTK data
 - Surface Drainage Map
 - Flow Paths, Hills & Depressions
 - Watershed Regions

- ✦ **Tile Plans** \$200/hr
 - Mains & Laterals
 - Outlets & Lift Stations
 - Drainage Coefficient & Tile Depths
 - Designed to your specifications

- ✦ **Land Shaping** \$200/hr
 - Re-Shape field to your design
 - Filling unwanted depressions
 - Create water retention areas
 - Minimum soil movement



Additional Services

- ✦ **Yield Map Processing** \$2.00/ac
 - Opt. Efficiency & Net Rev

- ✦ **Custom Mapping** \$200/hr

- ✦ **Customize Scripts** \$200/hr

* Drainage maps may be larger or smaller than "tillage" acres to give the best products. GK may request you to do onsite data collection to confirm elevations of outlets, location of culverts and utilities. GK Technology does not provide legal advice or fill out permits for projects. We will assist you in finding equipment and service providers if requested. Maps will be turned around in 48 to 72 hours or planned timelines. All Prices are subject to change.